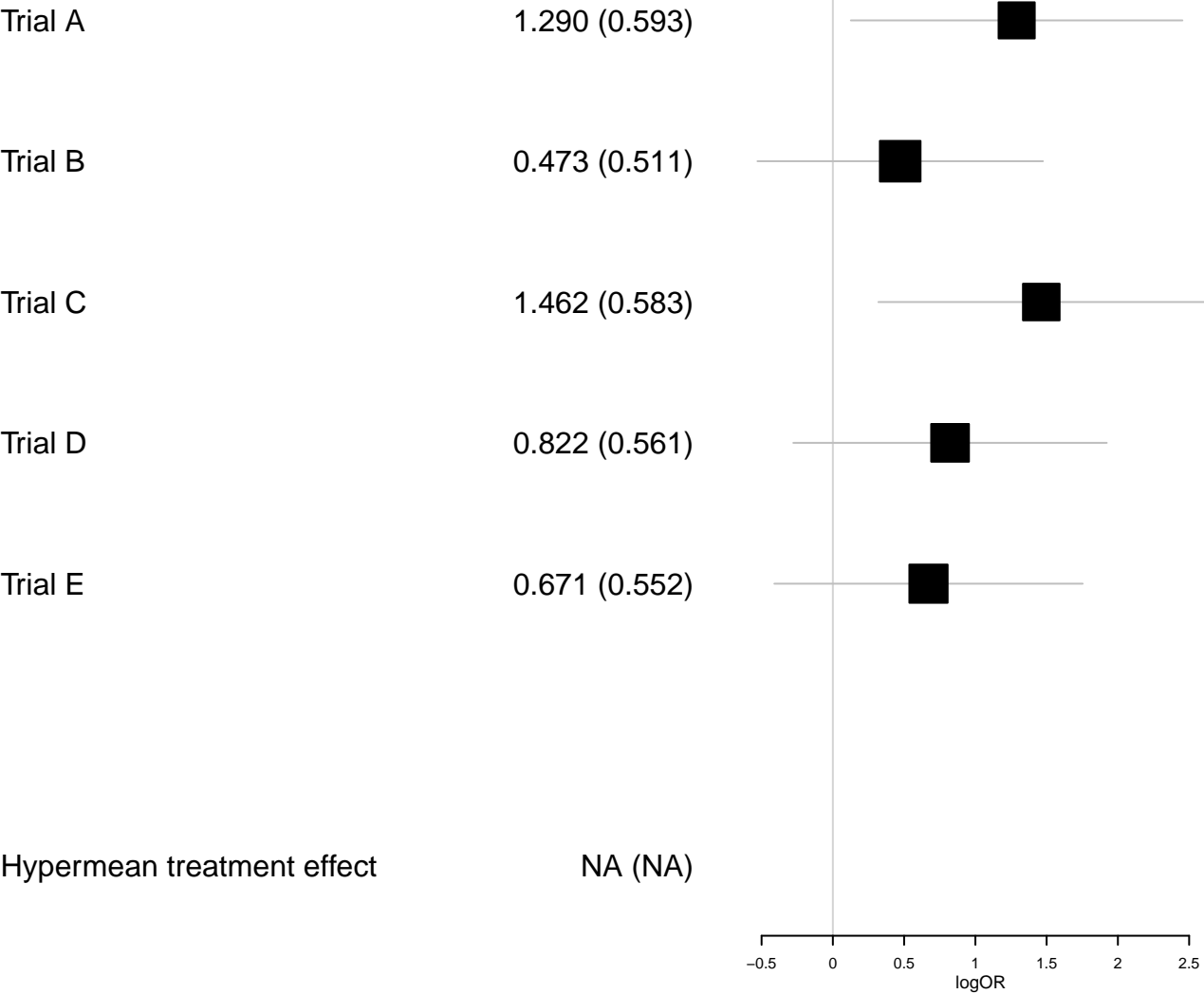




Group mean treatment effect

Mean (SD)



Group mean treatment effect

Mean (SD)

Trial A

1.290 (0.593)

Trial B

0.473 (0.511)

Trial C

1.462 (0.583)

Trial D

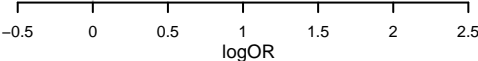
0.822 (0.561)

Trial E

0.671 (0.552)

Hypermean treatment effect

0.928 (0.391)



Group mean treatment effect

Mean (SD)

Trial A

1.290 (0.593)

Trial B

0.473 (0.511)

Trial C

1.462 (0.583)

Trial D

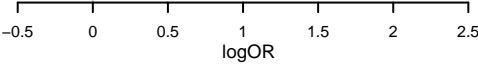
0.822 (0.561)

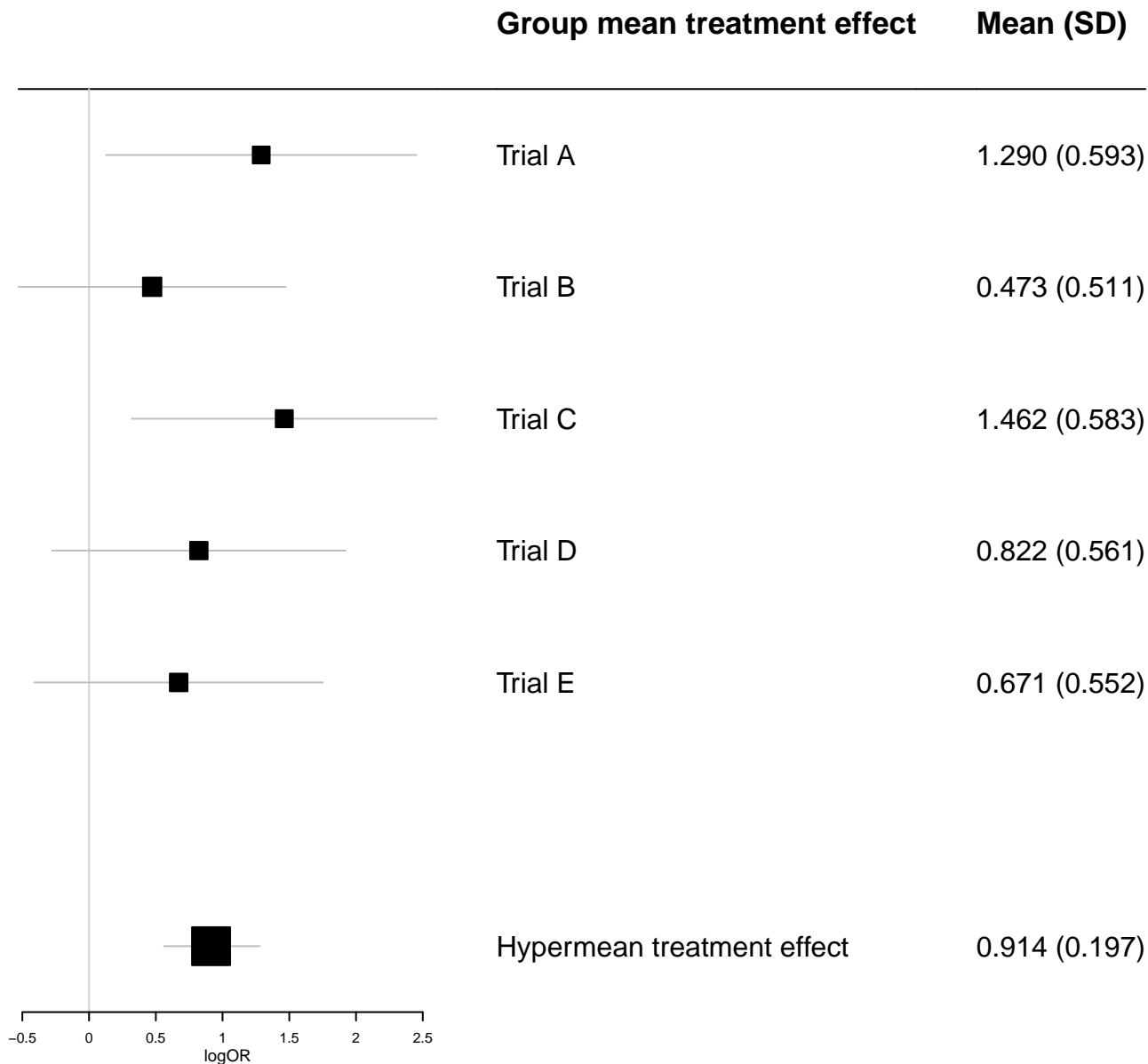
Trial E

0.671 (0.552)

Hypermean treatment effect

0.914 (0.197)

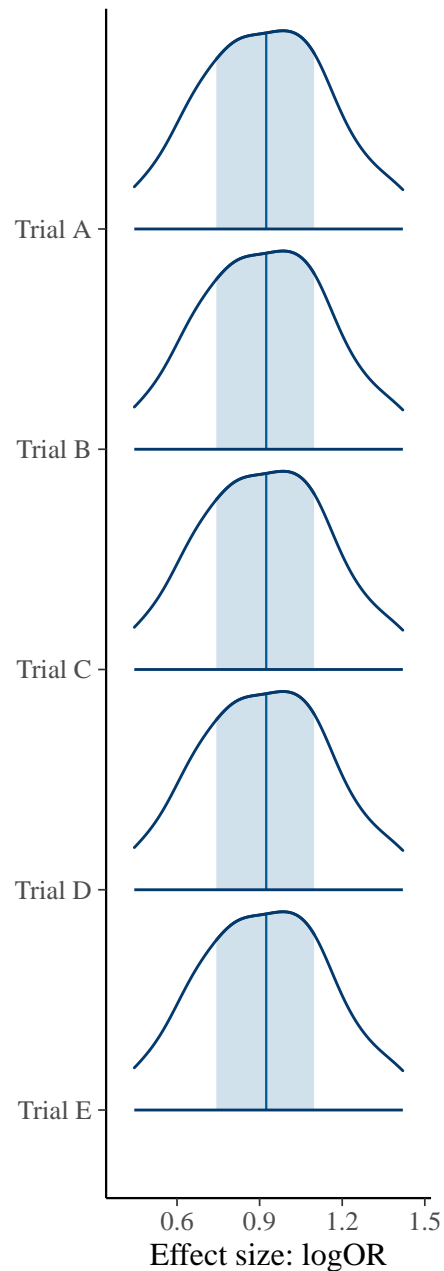
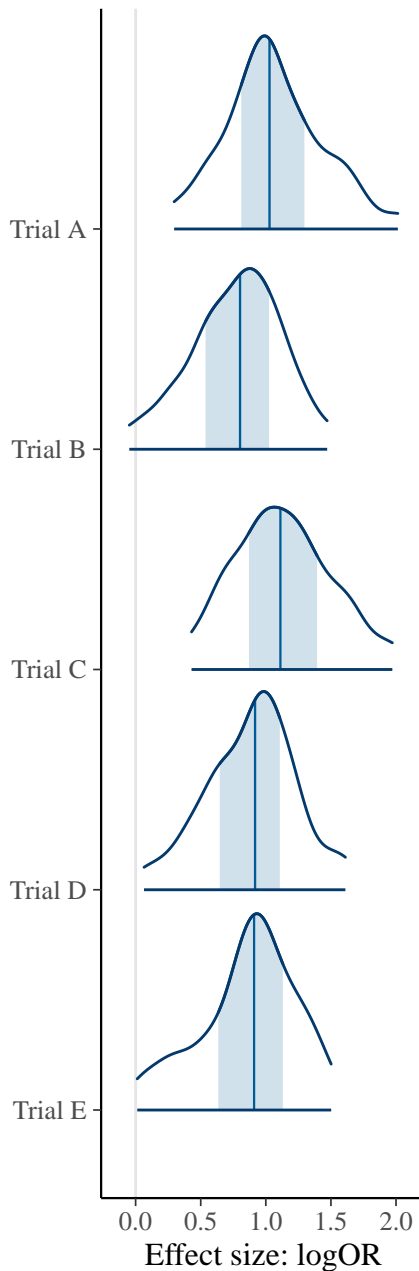
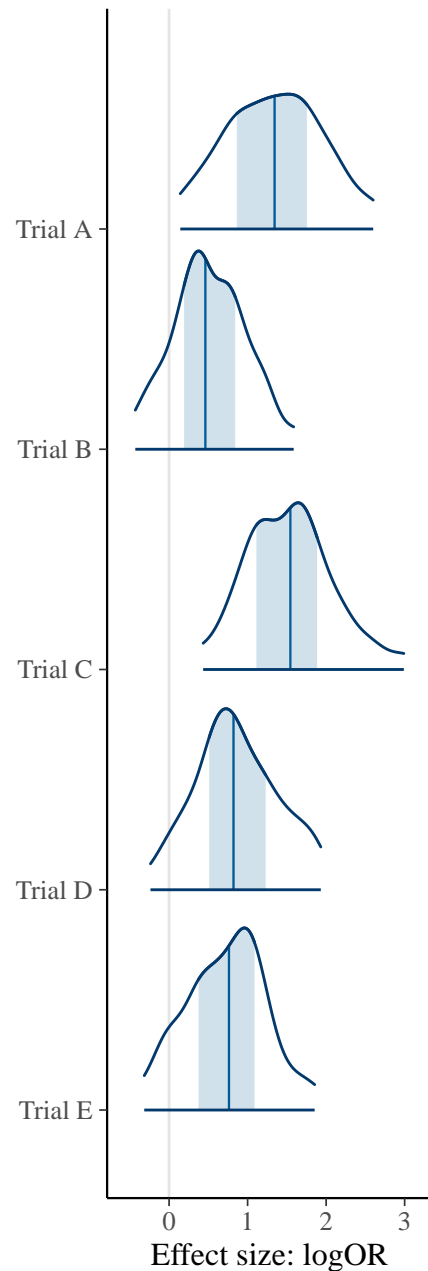




none

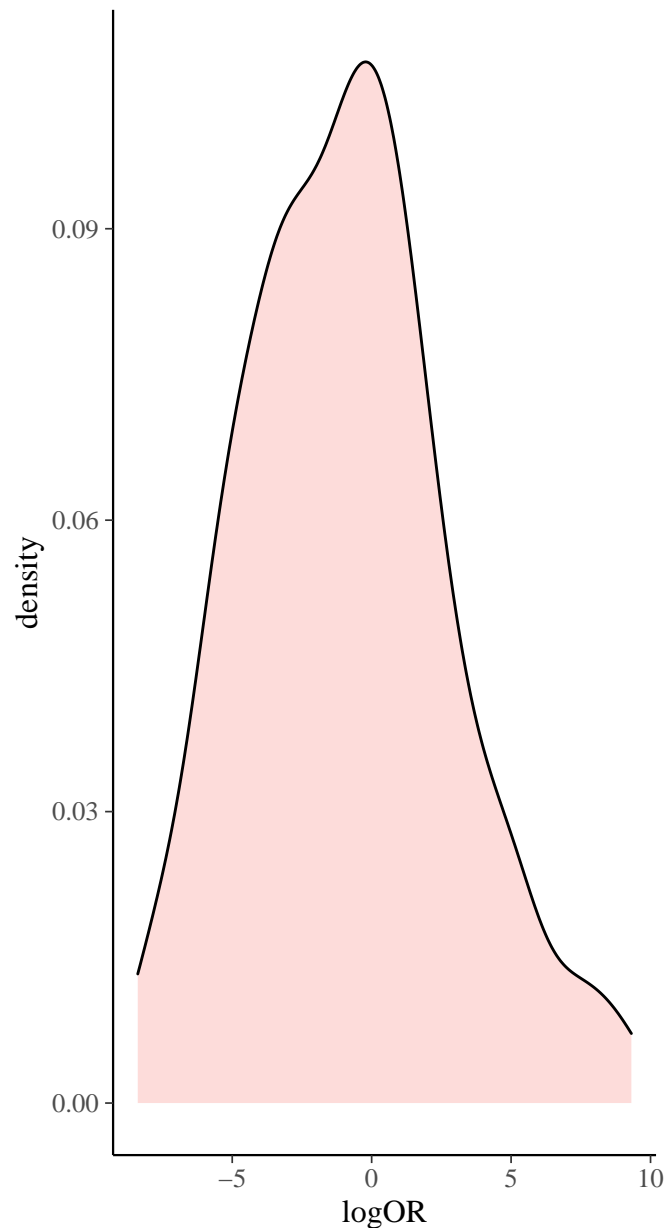
partial

full

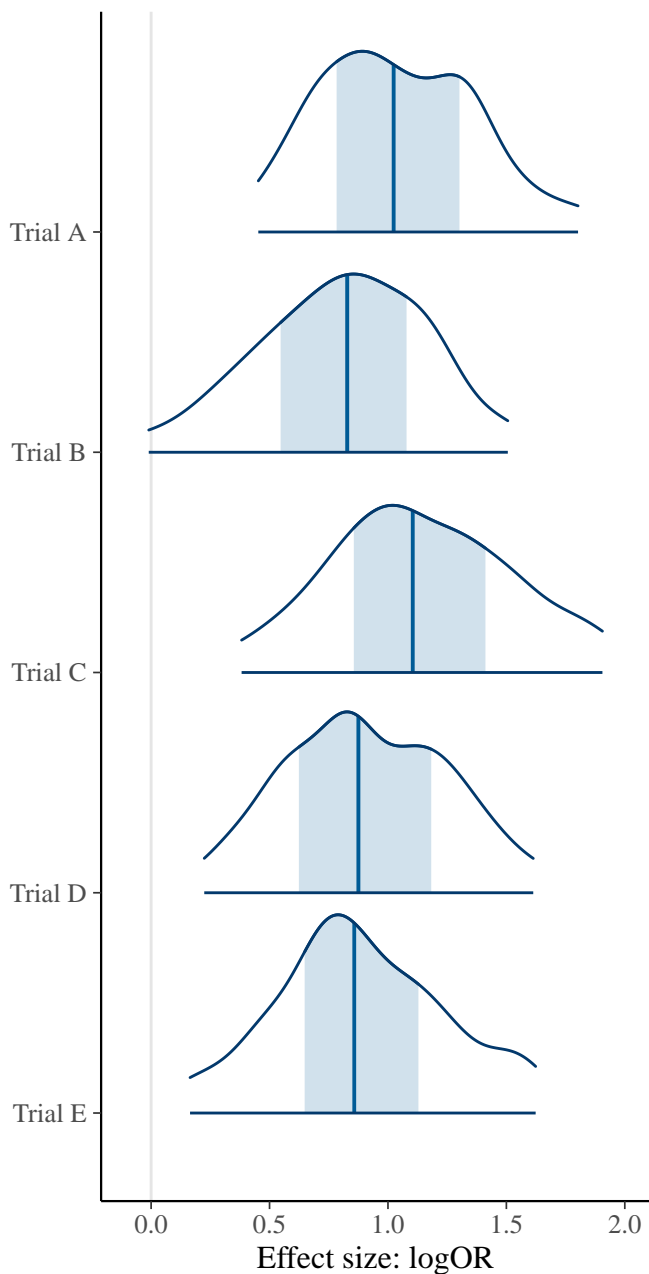


## Prior

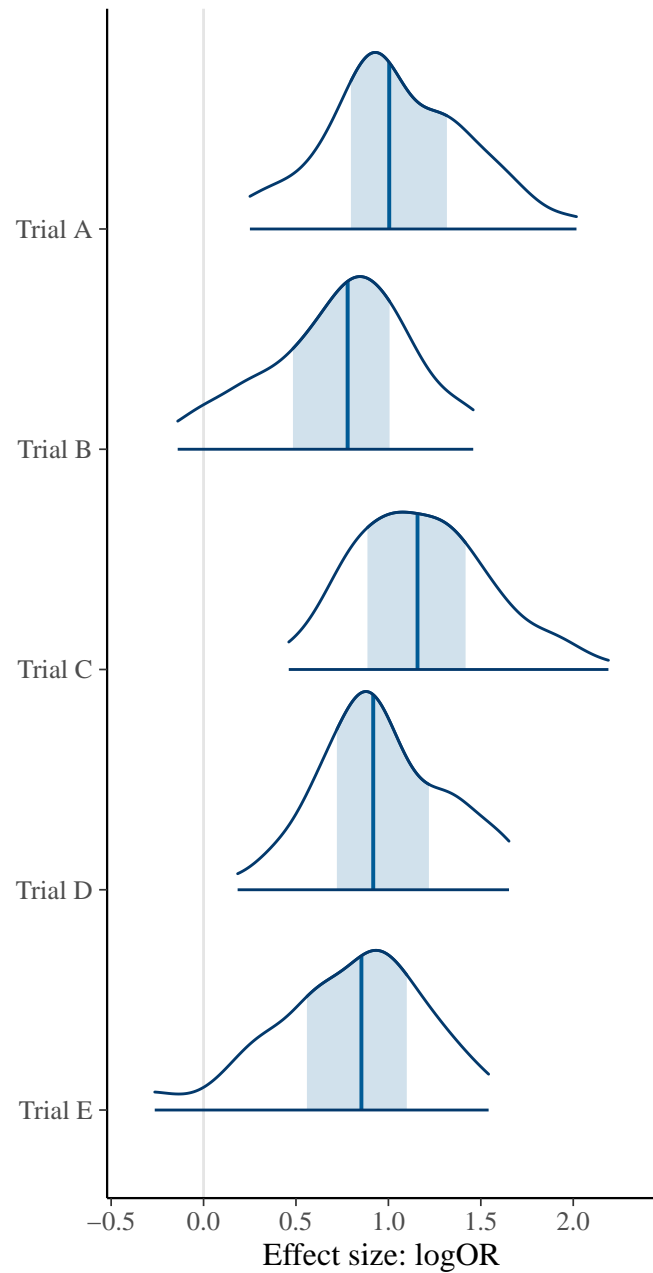
No data used, only sampling from priors



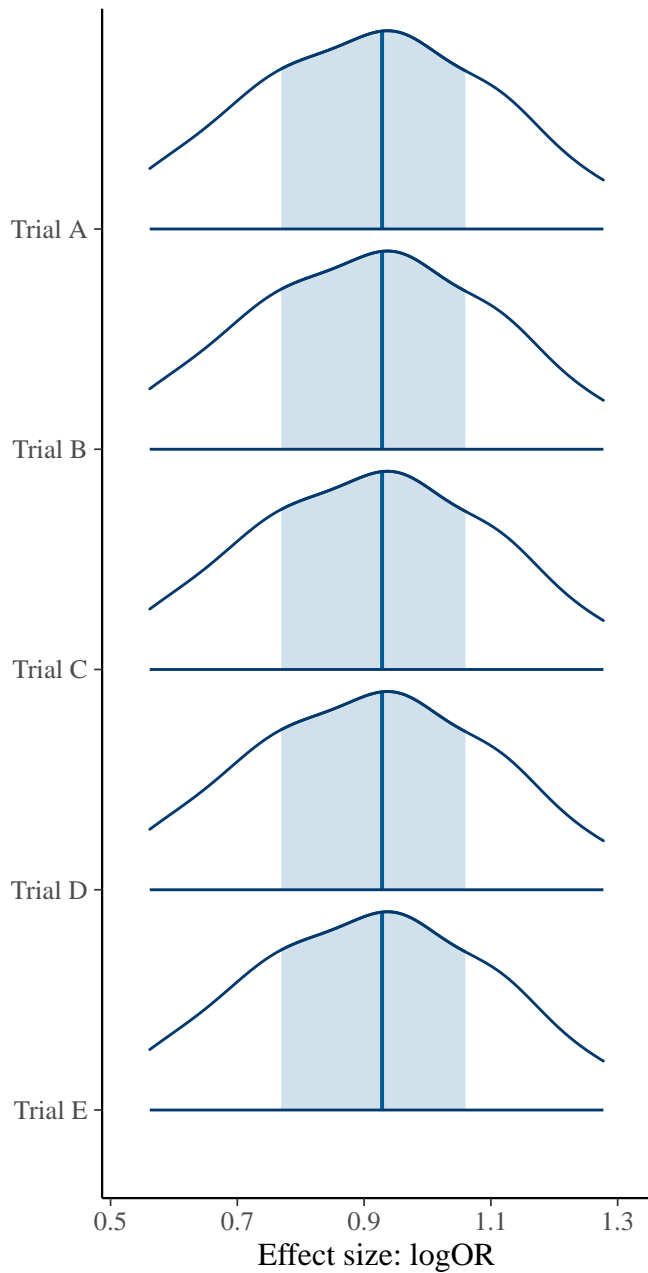
## Posterior



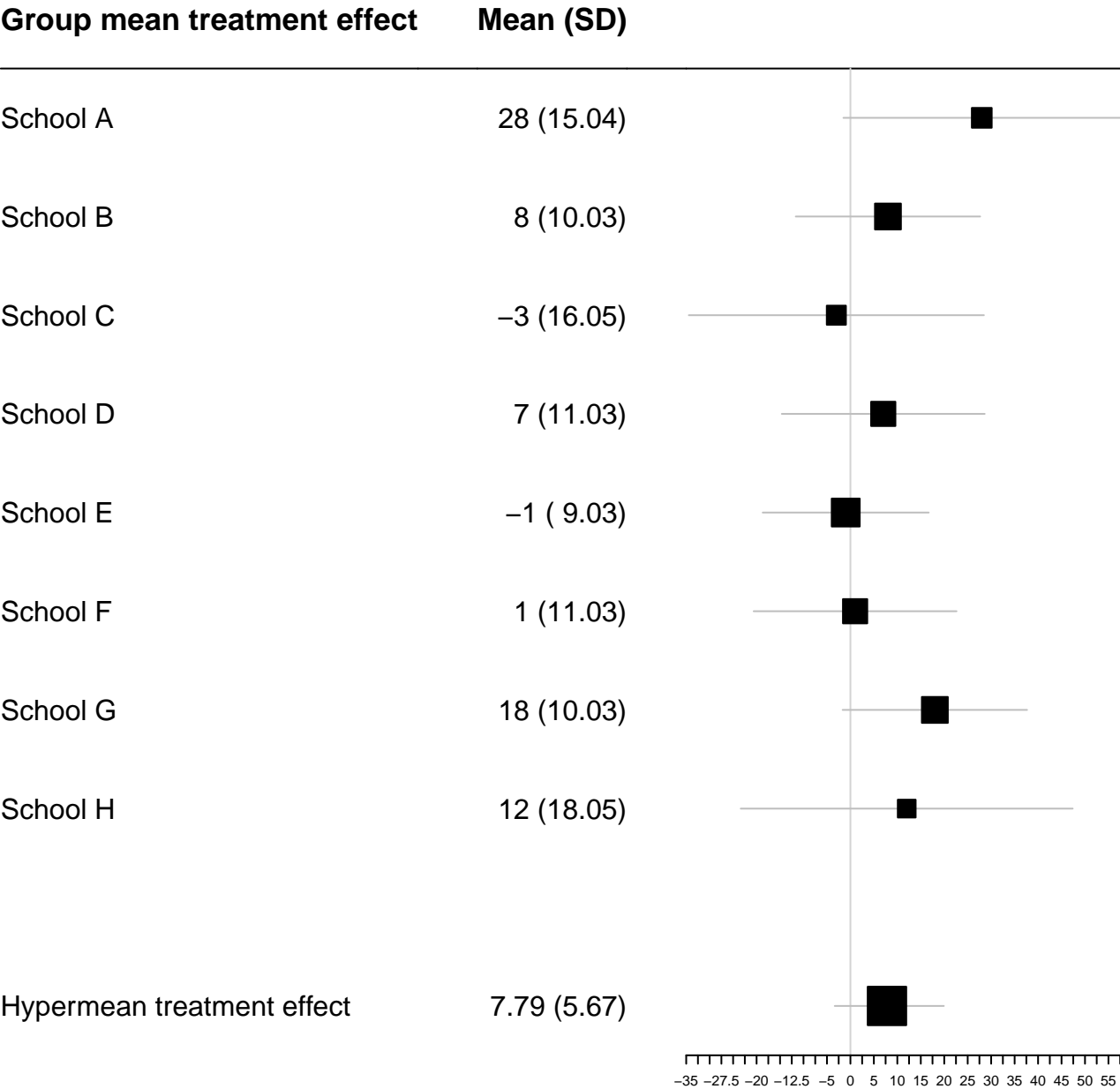
Model 1



Model 2



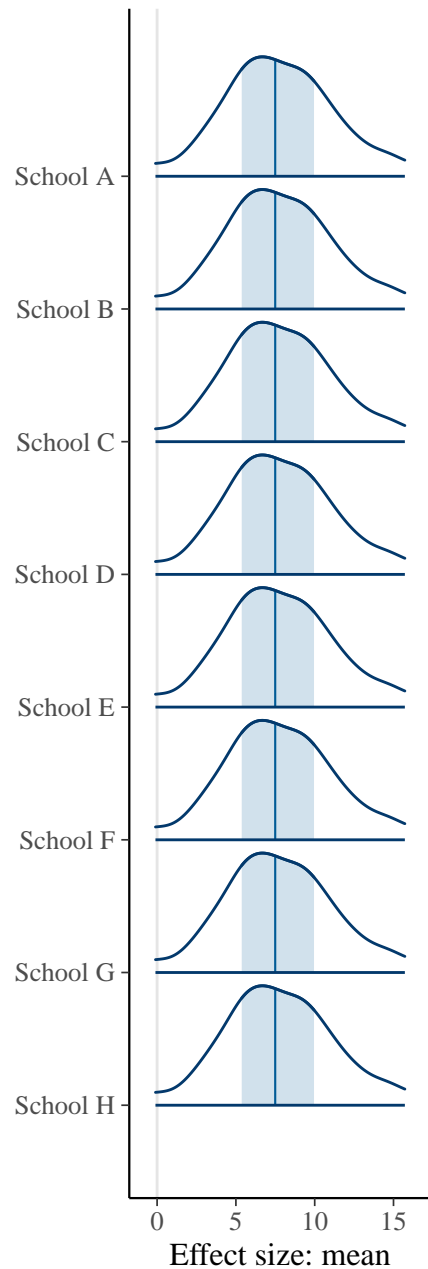
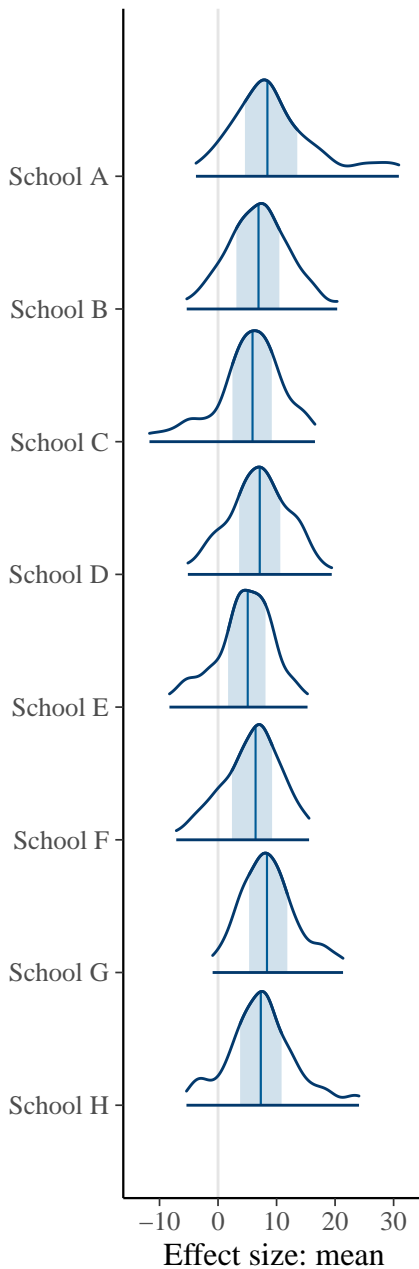
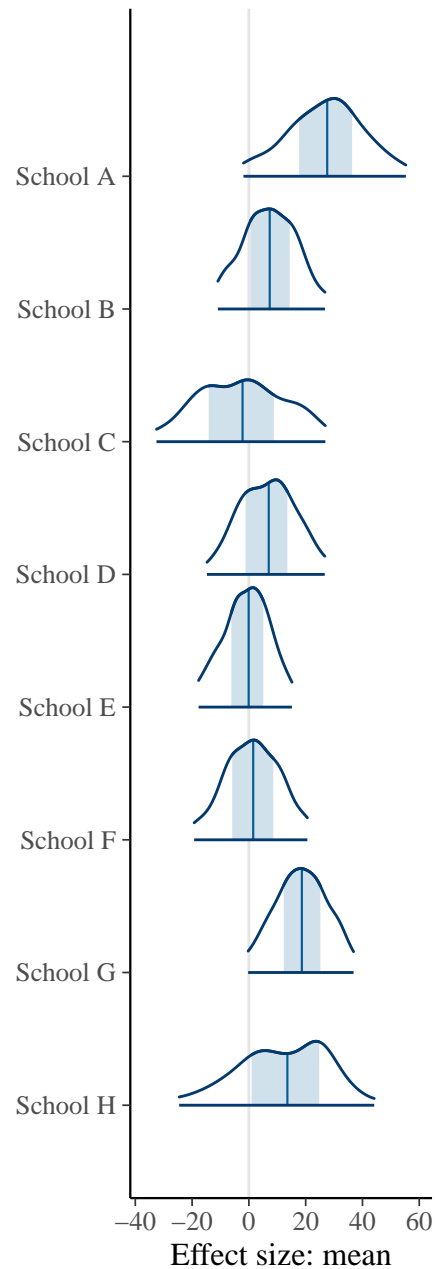




none

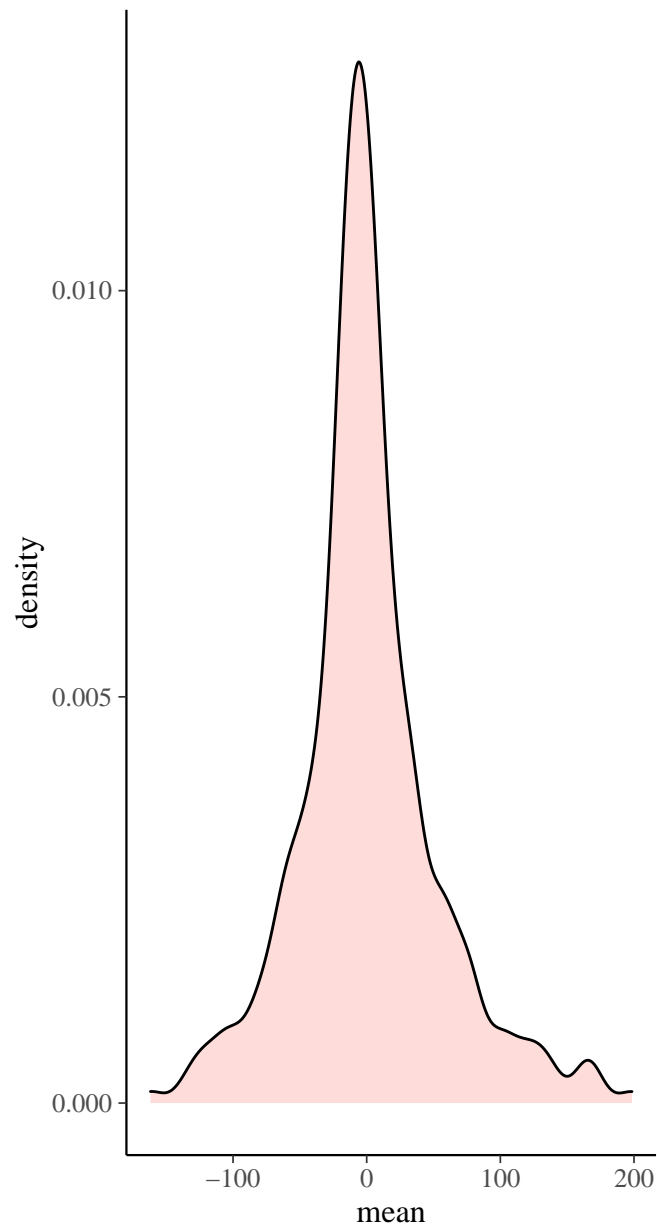
partial

full

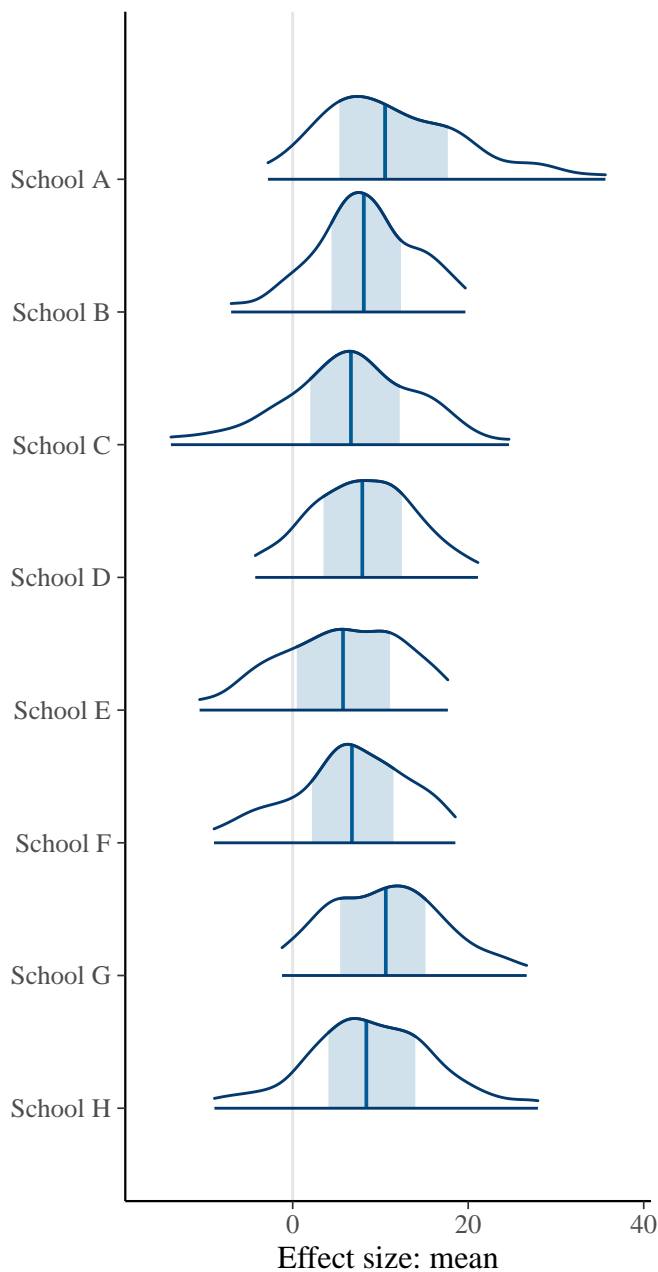


## Prior

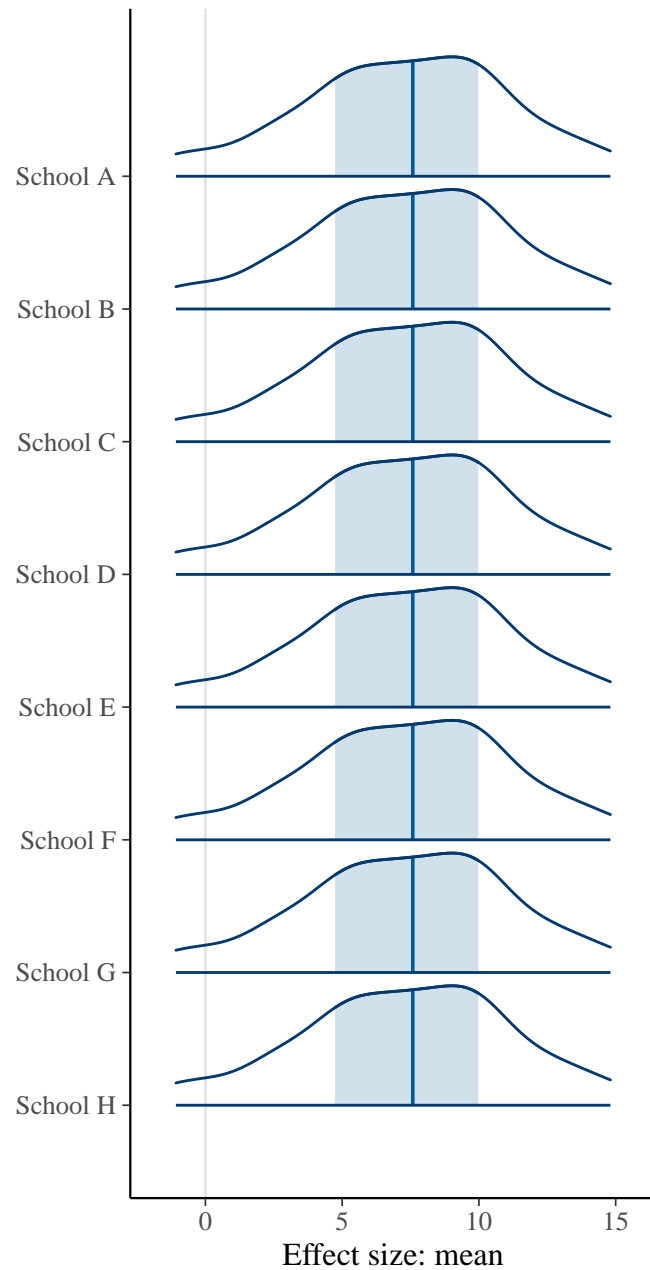
No data used, only sampling from priors



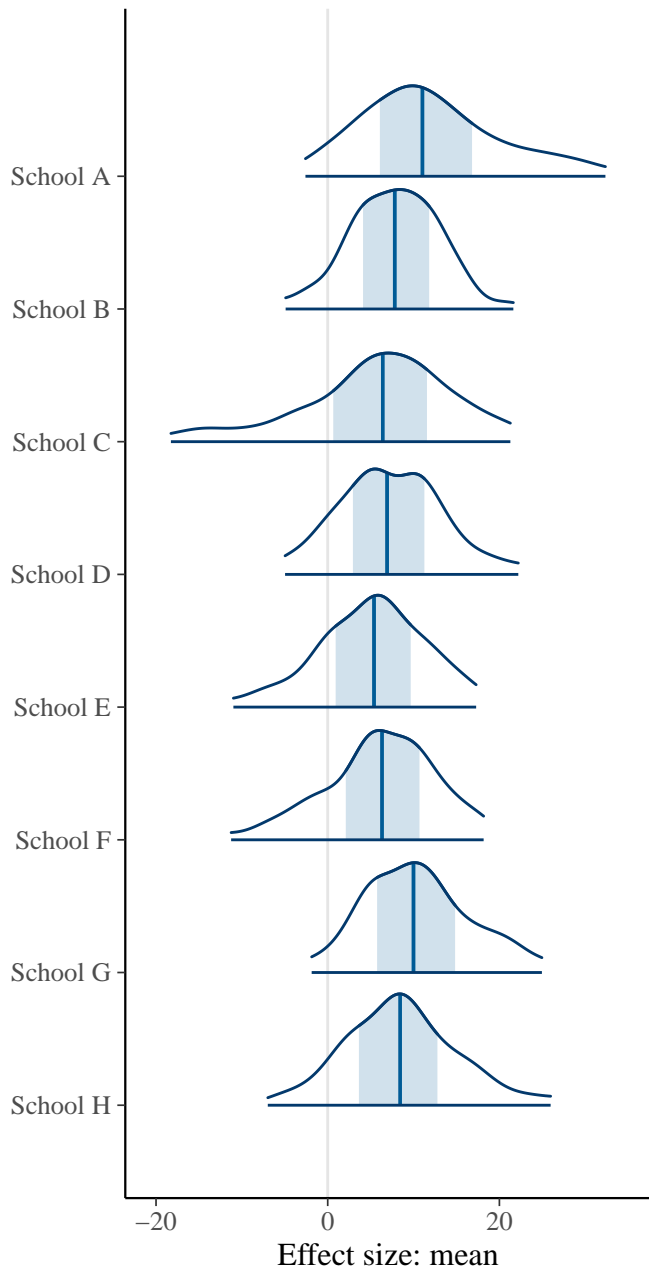
## Posterior

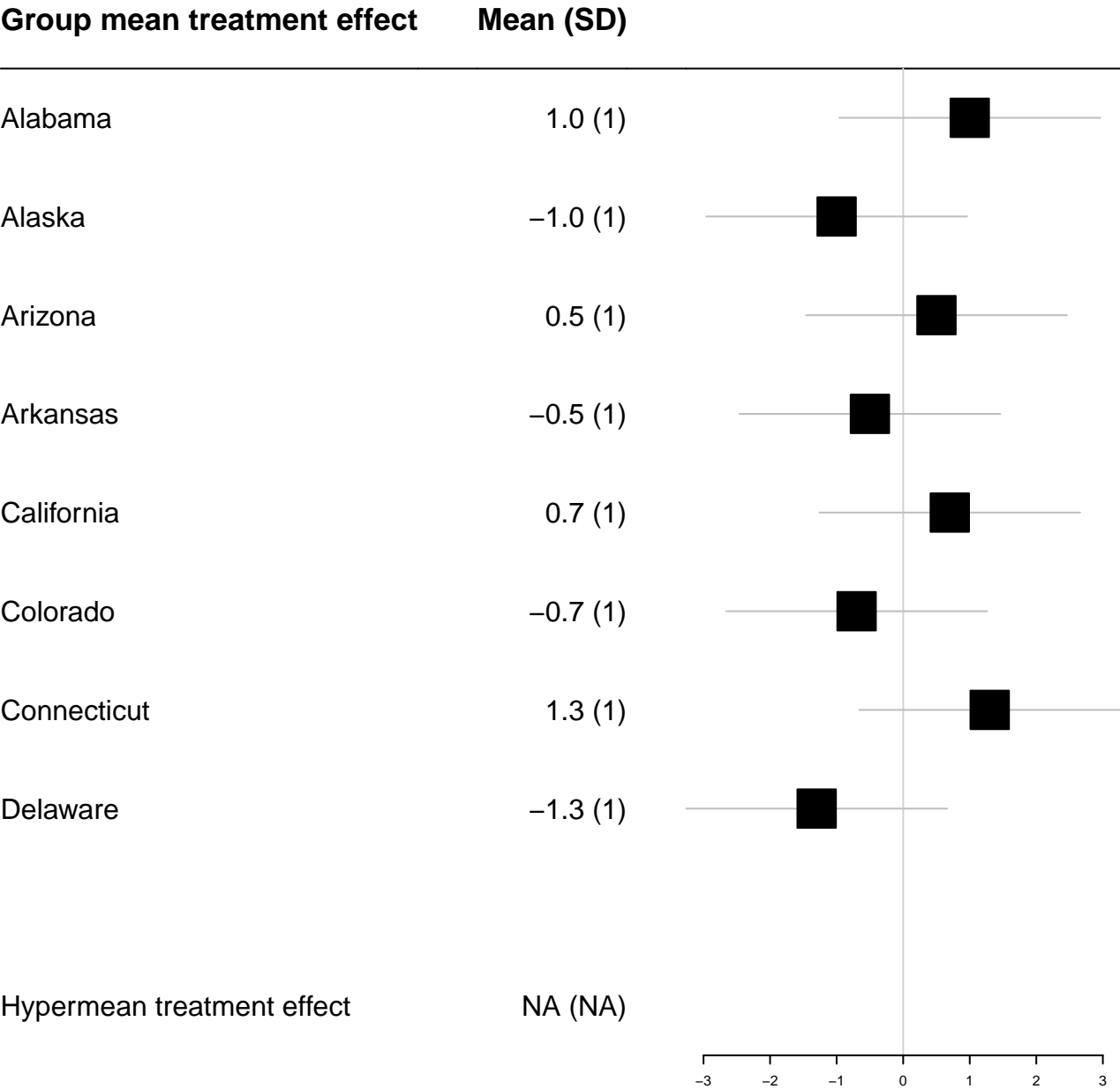


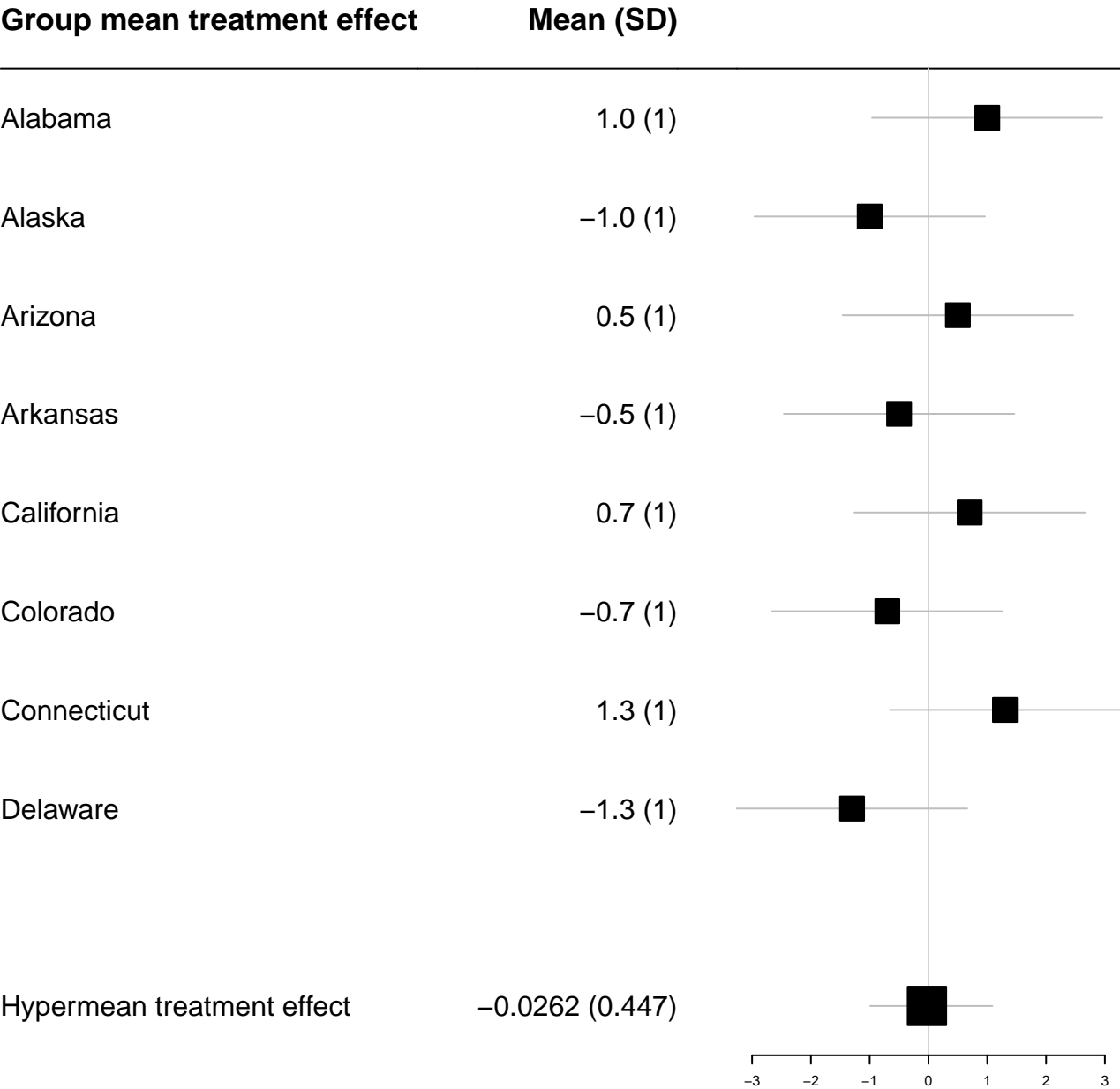
Model 1

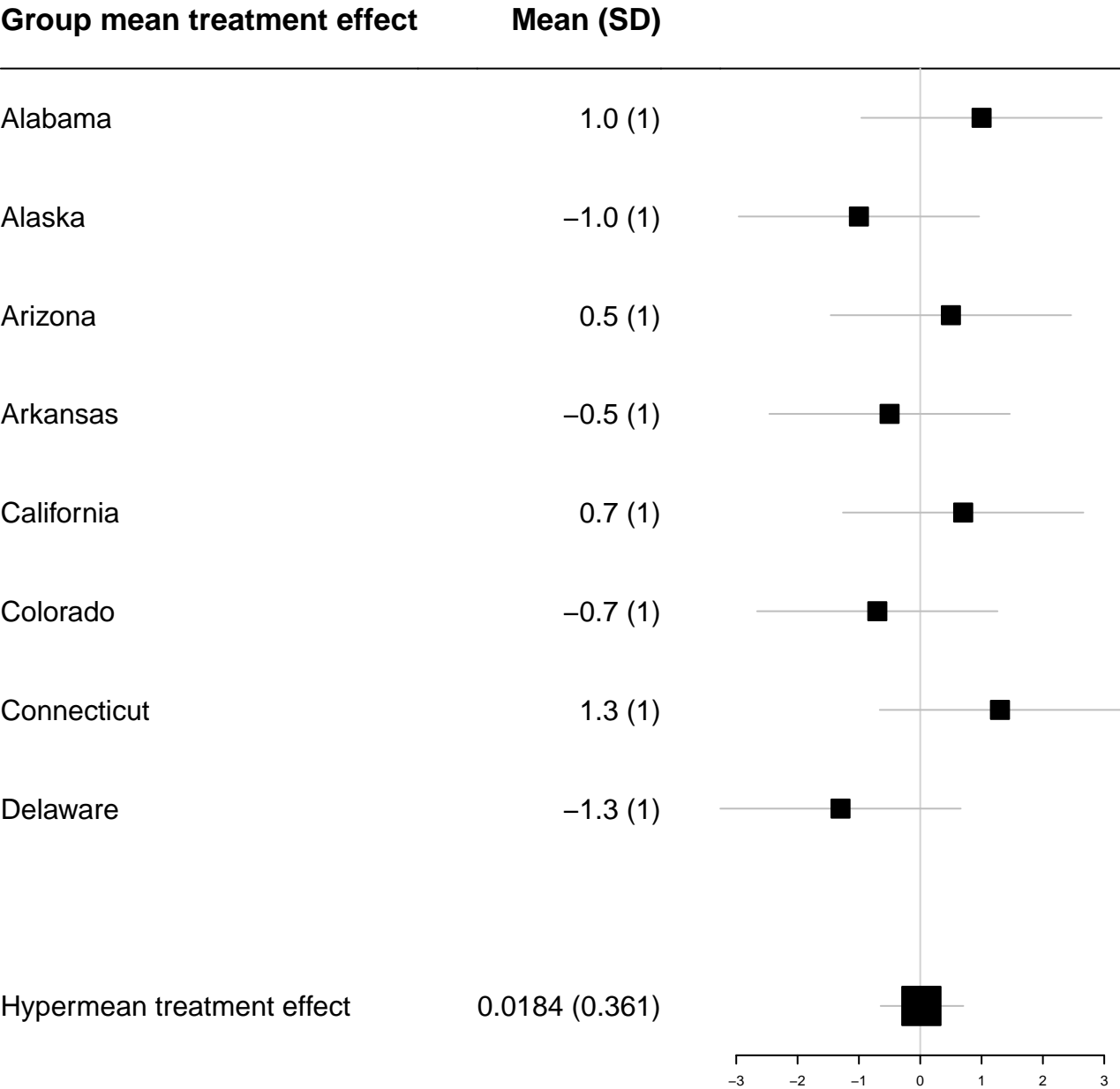


Model 2

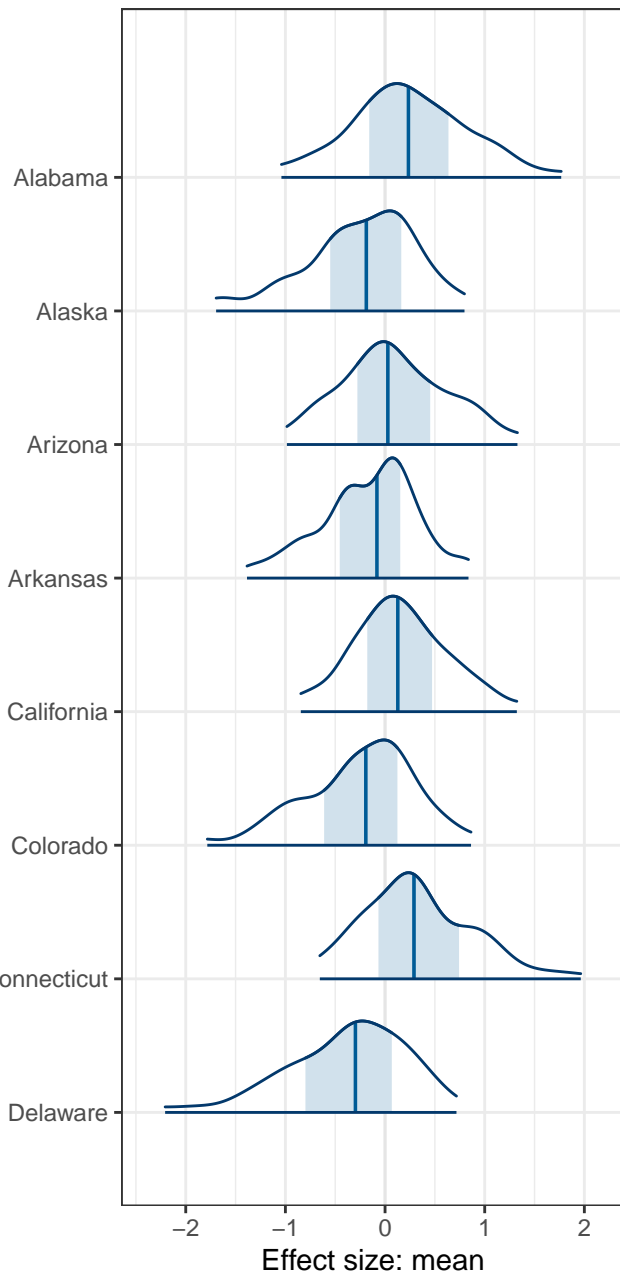




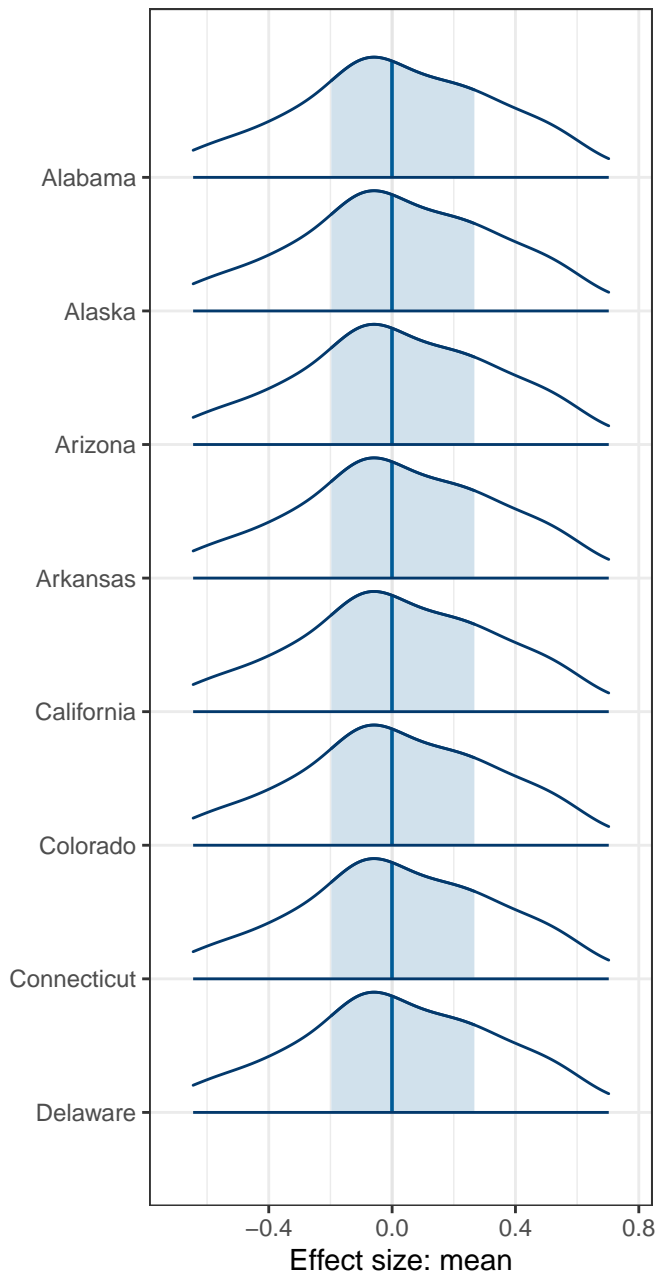




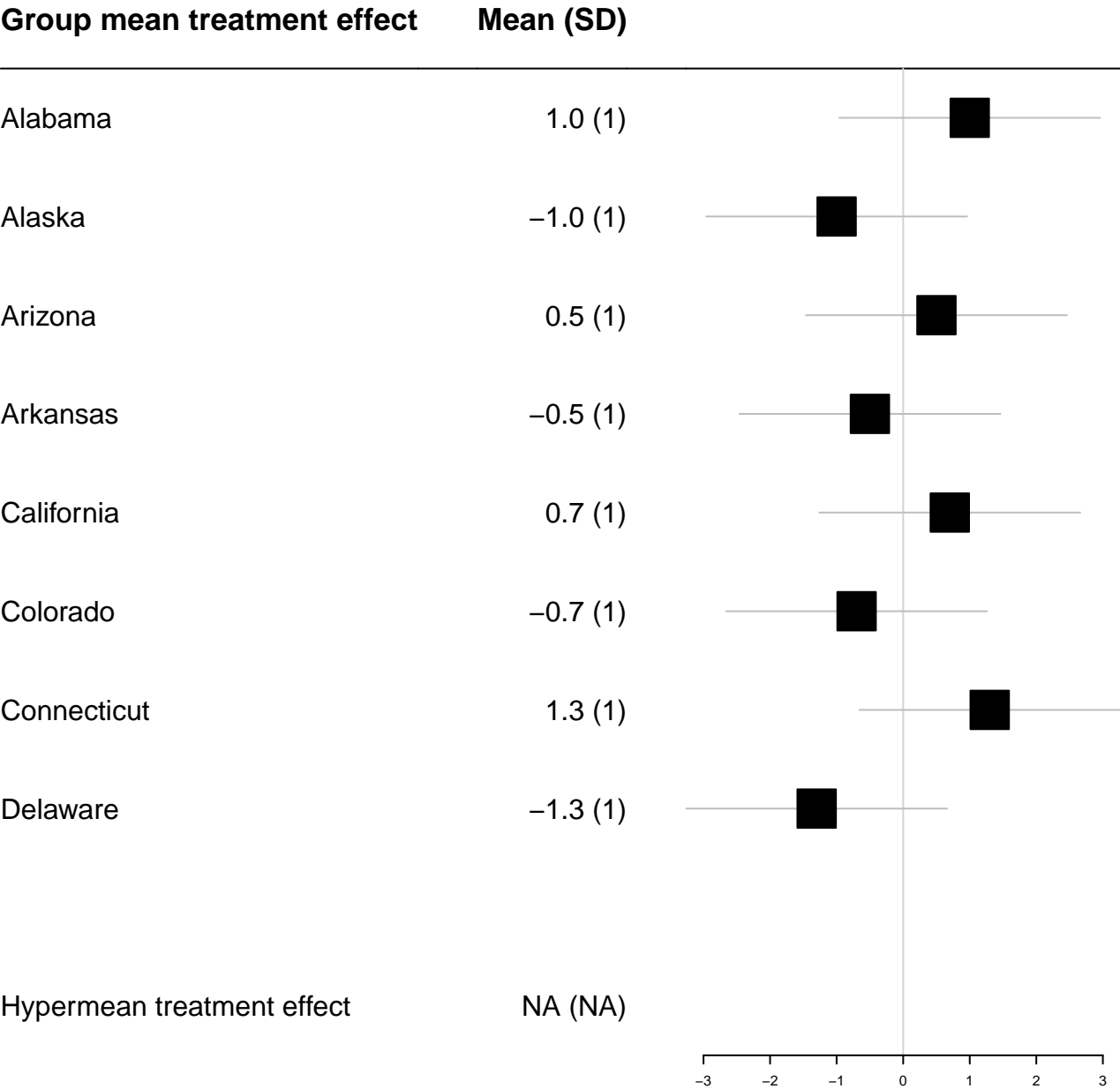
Model 1

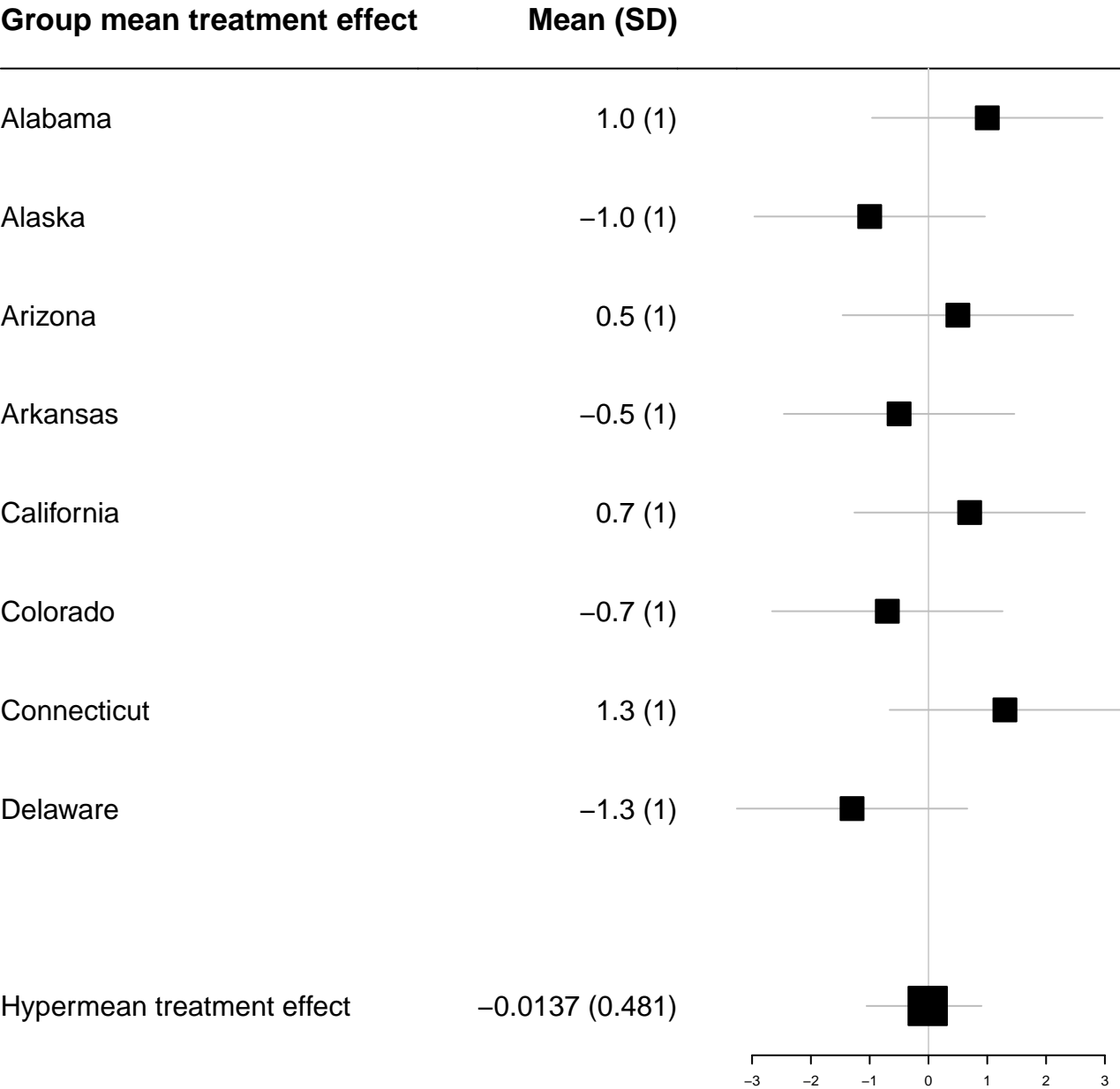


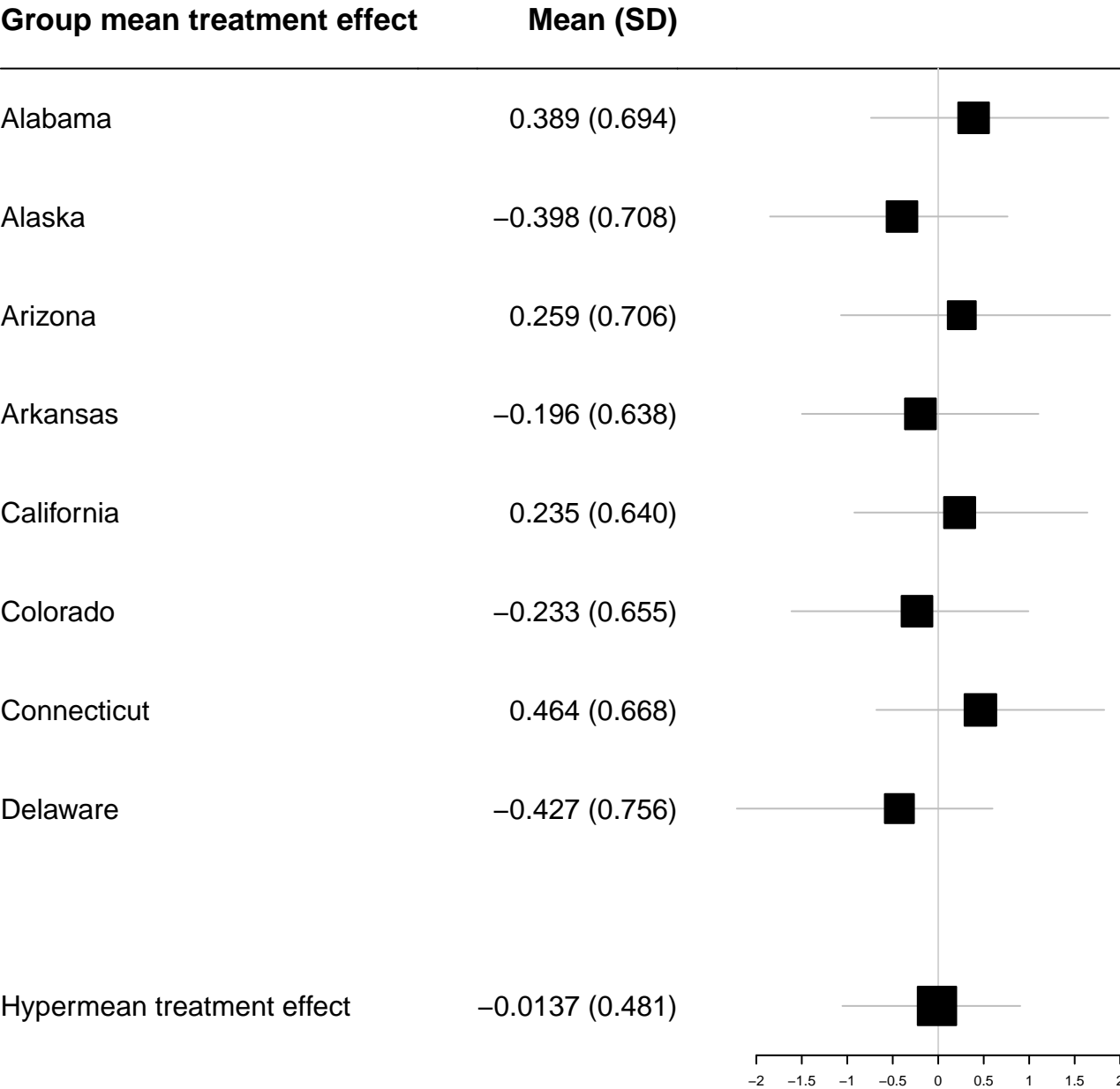
Model 2











● Input ■ Estimate

Group mean treatment effect

Mean (SD)

Alabama

0.389 (0.694)

Alaska

−0.398 (0.708)

Arizona

0.259 (0.706)

Arkansas

−0.196 (0.638)

California

0.235 (0.640)

Colorado

−0.233 (0.655)

Connecticut

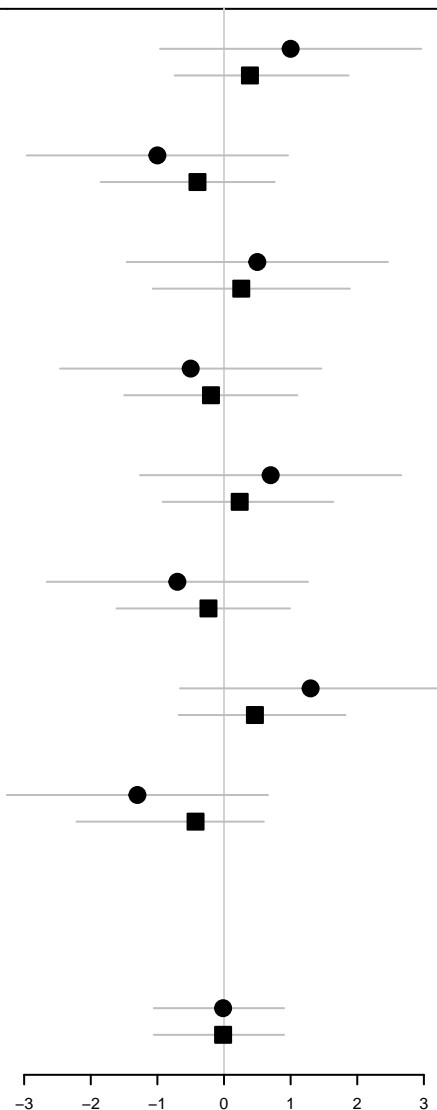
0.464 (0.668)

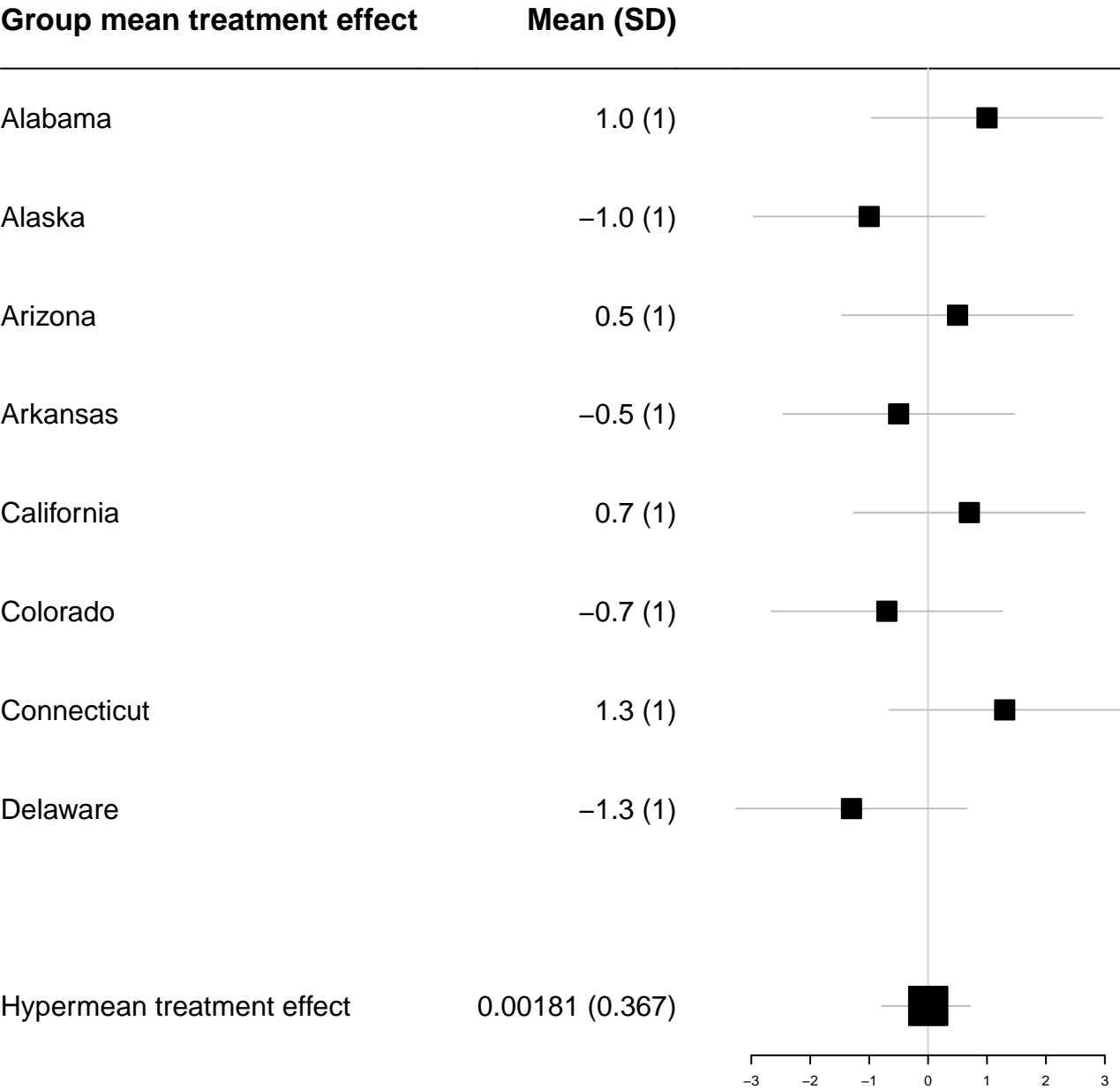
Delaware

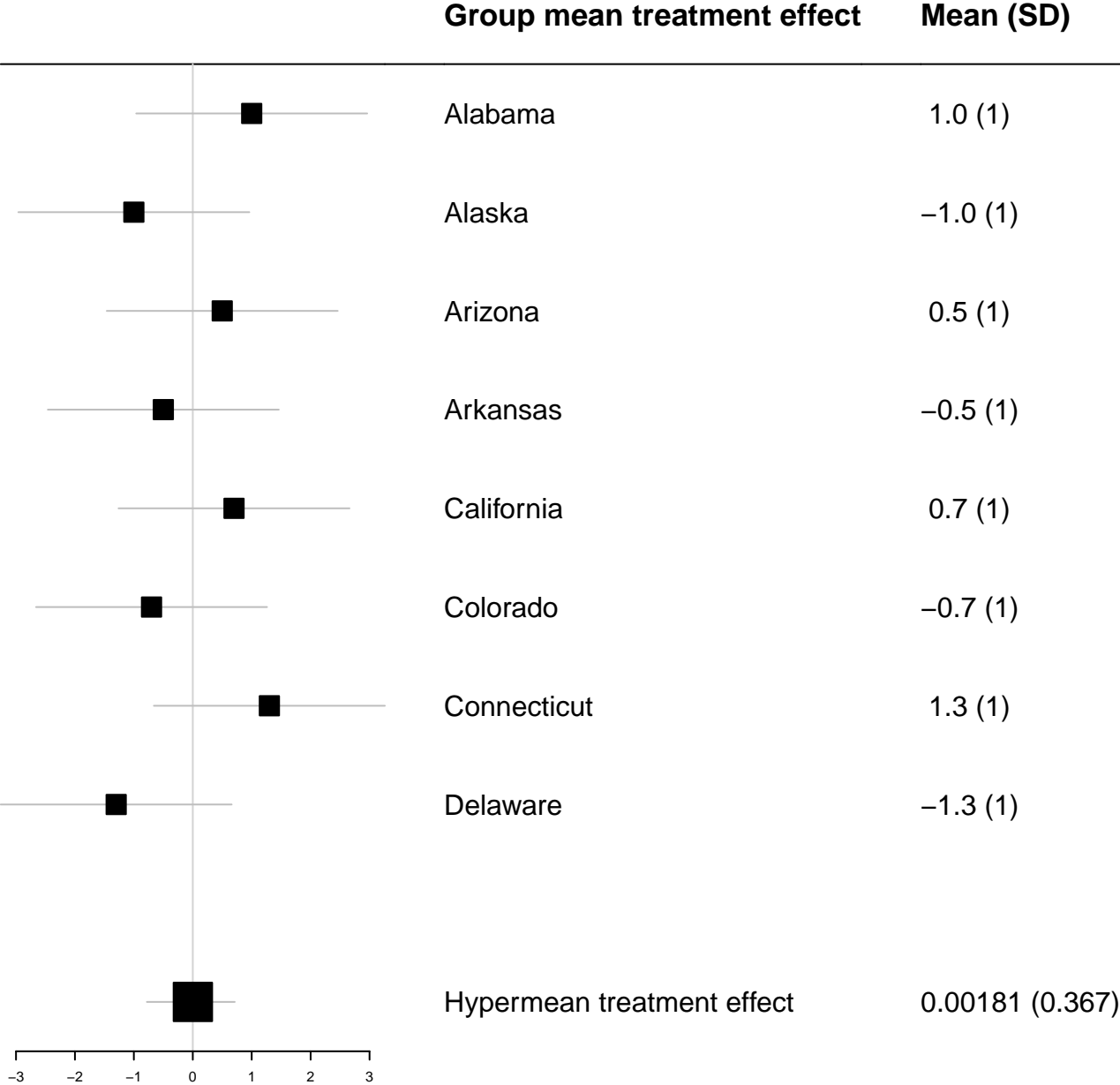
−0.427 (0.756)

Hypermean treatment effect

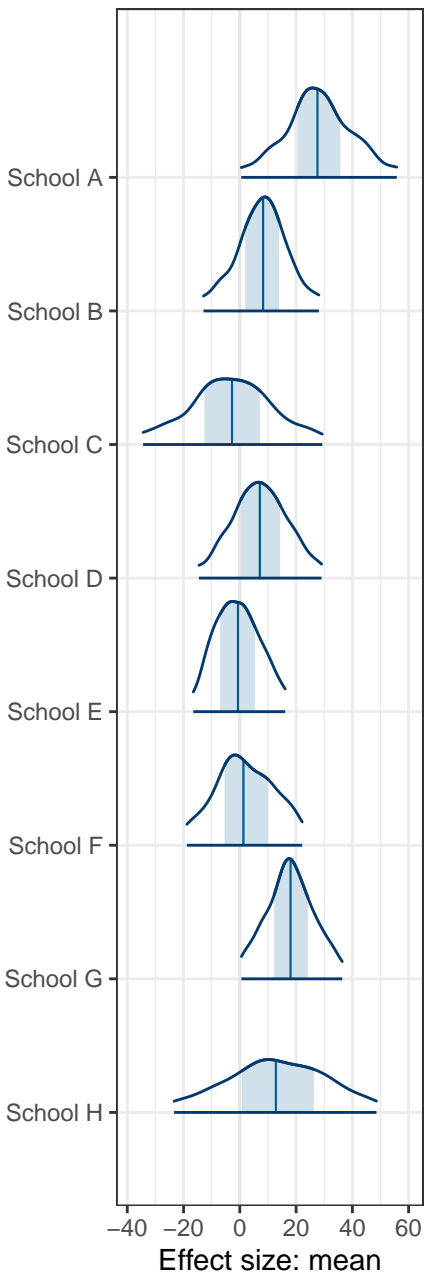
−0.0137 (0.481)



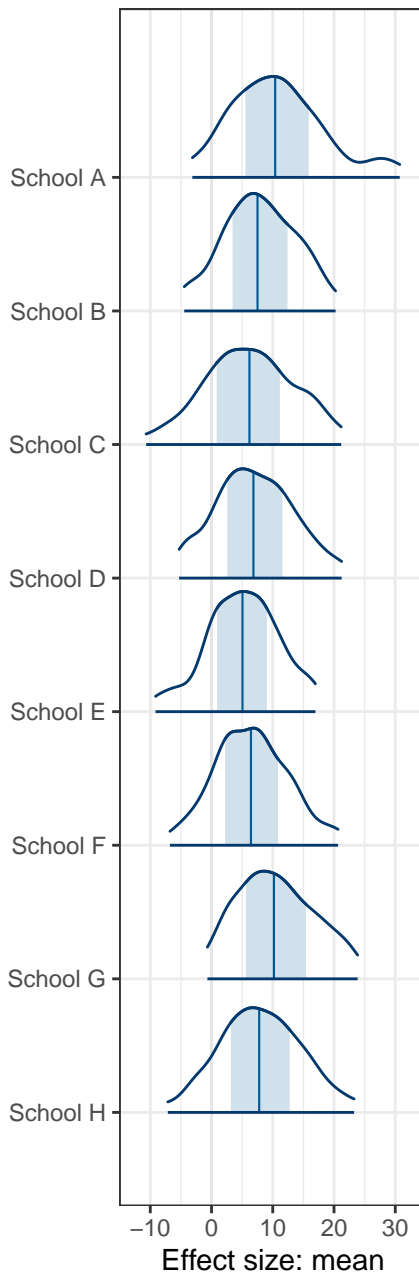




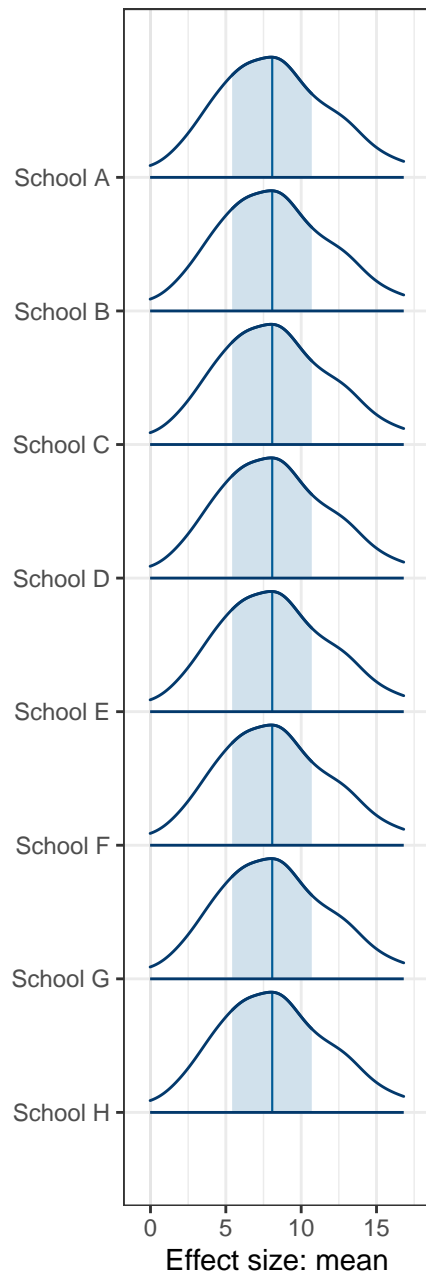
none



partial

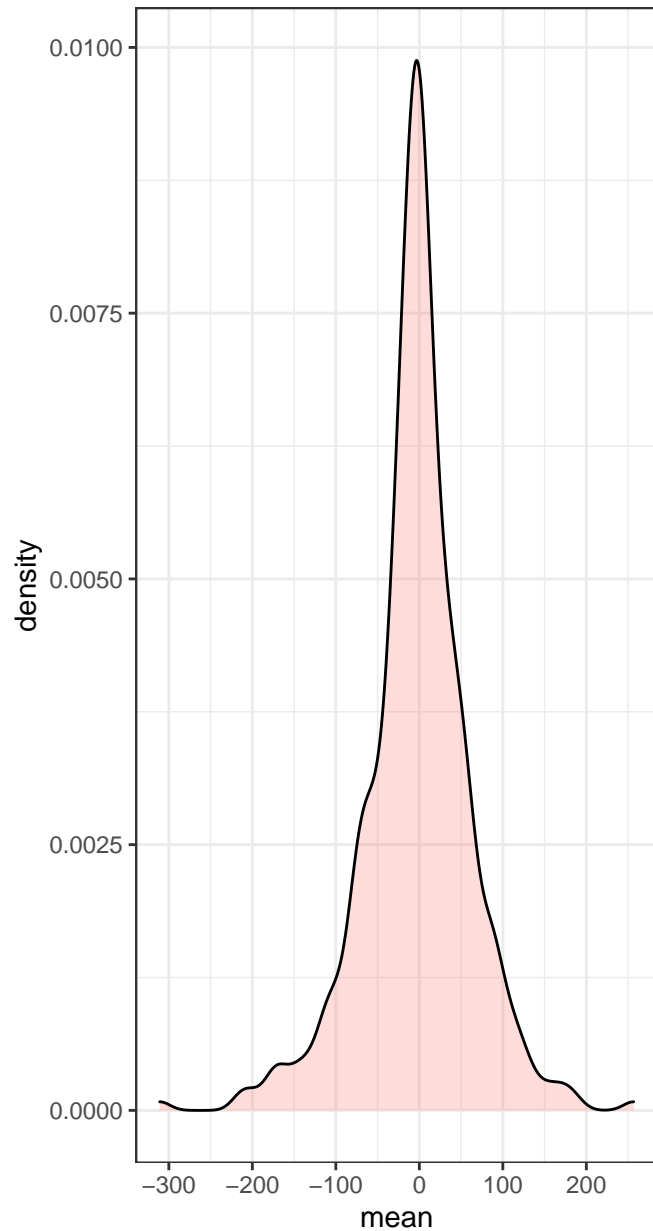


full



## Prior

No data used, only sampling from priors



## Posterior

